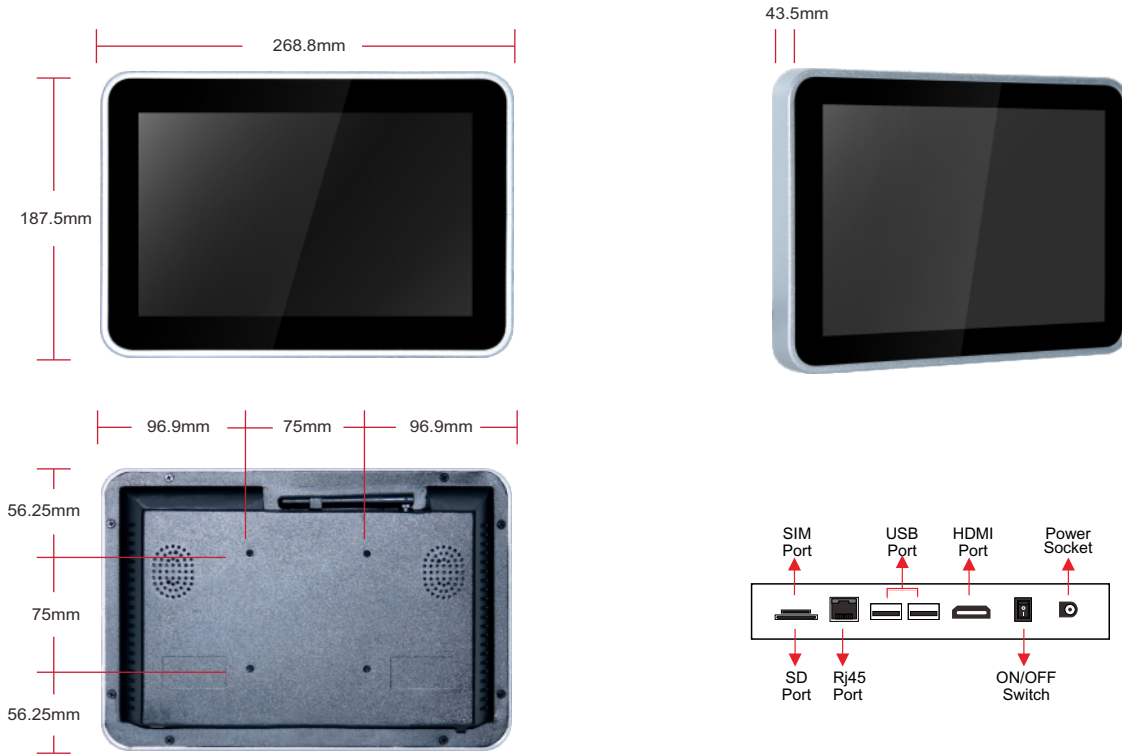




# 10.1" Android Network Digital Signage



## Specifications

PANEL	Panel Model	10.1inch TFT LED
	Max Resolution	1280×800
	Aspect Ratio	16:10
	Pixel Pitch	0.1659×0.1659
	Viewing Angle	85/85/85/85
	Contrast Ratio	1300 : 1
	Brightness	350cd/m <sup>2</sup>
	Response Time	25ms
	Display Area (mm)	216.96×135.60
	Panel Size(mm)	241.86×161.6×5.2mm
Screen Weight	180g	
Lamp Type	WLED	
INTERNAL MEDIA PLAYER	CPU	Quad-core ARM Cortex-A9, 1.6GHz
	GPU	ARM Mali-400MP4
	RAM	1/2GB DDR3
	ROM	8/16 GB Flash
	OS	Android 4.4
CONNECTOR	USB 2.0	X2
	HDMI (Output)	X1
	SD	X1
	Rj45	X1
	3G SIM (Optional)	X1
CONNECTIVITY	LAN	RJ45 Port, 10/100M Ethernet
	WiFi	Built-in WiFi 802.11B/G/N
	3G (Optional)	WCDMA
FILE SUPPORT	Video	H.264, MKV, WMV9, MPEG 1/2/4, HD Divx, Xvid, RM/RMVB;
	Image	BMP/PNG/GIF/JPEG
	Audio	MP3,WMA,WAV,EAAC+, MP2 dec, Vorbis (Ogg), AC3, FLAC, APE, BSAC
	Scrolling Text	txt

HDMI DISPLAY	Output Mode	HDMI 480P HDMI 576P HDMI 720P 50Hz HDMI 720P 60Hz HDMI 1080I 50Hz HDMI 1080I 60Hz HDMI 1080P 24Hz HDMI 1080P 50Hz HDMI 1080P 60Hz	
	ON-SCREEN DISPLAY LANGUAGES	English, French, German, Italian, Polish, Russian, Simplified Chinese, Spanish, Turkish, Arabic, Japanese, Traditional Chinese etc.	
	DISPLAY MODE	Portrait & Landscape	
	POWER	Mains Power Consumption	DC 12V, 50-60 Hz 12 W
		SOUND	Built-in Speakers 2 x 5W
	DIMENSION & WEIGHT	Machine Size	268.8x187.5x43.5mm
		Machine Weight	1.4KG
		Carton Size	360X210X60mm
		Carton Weight	2.2KG
		Carton Size	430x372x325mm (10PCS)
Carton Weight	25KG		
OTHER	Regulatory Approvals	CE, FCC, ROHS	
	Warranty	1 year warranty	
ACCESSORIES	Included	Remote Control, Power supply, User manual, Keys, Screws	